

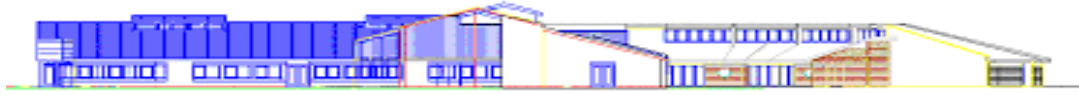
# **Redhill Primary School**

## **Medical Conditions Policy**

Signed

A handwritten signature in blue ink, appearing to read 'A. Jenkins'. The signature is written in a cursive style with a long horizontal stroke at the end.

**Mr Adrian Jenkins, Chair of Governors**



The Board of Governors and staff of Redhill Primary School wish to ensure that pupils with medical conditions and medication needs receive appropriate care and support at school. The Headteacher will accept responsibility in principle for members of the school staff giving or supervising pupils taking prescribed medication during the school day where those members of staff have volunteered to do so.

**Redhill Primary School is an inclusive community that welcomes and supports pupils with medical conditions.**

**This school provides all pupils with any medical condition the same opportunities as others at school.**

We will help to ensure they can:

- be healthy
- stay safe
- enjoy and achieve
- make a positive contribution
- achieve economic wellbeing once they left school.

The school makes sure all staff understand their duty of care to children and young people in the event of an emergency and that all staff feel confident in knowing what to do in an emergency.

This school understands that certain medical conditions are serious and potentially life threatening, particularly if poorly managed or misunderstood.

This school understands the importance of medication and care being taken as directed by healthcare professionals and parents.

All staff understand the medical conditions that affect pupils at this school. Staff receive training on the impact medical conditions can have on pupils.

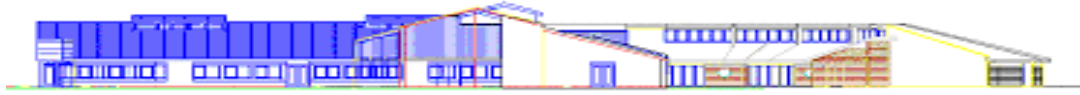
The named member of school staff responsible for this medical conditions policy and its implementation is: **Claire Lamb**. The Policy will be reviewed by Claire Lamb and by the Safeguarding Governor Beth Tutchener-Ellis

### **Policy framework**

The policy framework describes the essential criteria for how the school can meet the needs of children and young people with long-term conditions including diabetes.

**This school is an inclusive community that supports and welcomes pupils with medical conditions.**

- This school is welcoming and supportive of pupils with medical conditions. It provides children with medical conditions with the same opportunities and access to activities (both school based and out-of-school) as other pupils. No child will be denied admission or prevented from taking up a place in this school because arrangements for their medical condition have not been made.
- This school will listen to the views of pupils and parents.
- Pupils and parents feel confident in the care they receive from this school and the level of that care meets their needs.
- Staff understand the medical conditions of pupils at this school and that they may be serious, adversely affect a child's quality of life and impact on their ability to learn.
- All staff understand their duty of care to children and young people and know what to do in the event of an emergency. All school staff receive annual asthma awareness training
- The whole school and local health community understand and support the medical conditions policy.
- This school understands that all children with the same medical condition will not have the same needs.
- The school recognises that duties in the Children and Families Act (England only), the Equality Act (England, Wales and Scotland) and the Disability Discrimination Act (Northern Ireland only) relate to children with disability or medical conditions is anticipatory



**This school's medical conditions policy is drawn up in consultation with a wide range of local key stakeholders within both the school and health settings.**

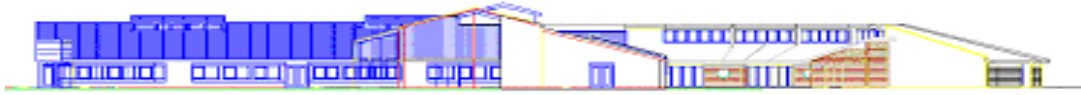
- Stakeholders should include pupils, parents, school nurse, school staff, governors, and relevant local health services.

**The medical conditions policy is supported by a clear communication plan for staff, parents\* and other key stakeholders to ensure its full implementation.**

- Pupils, parents, relevant local healthcare staff, and other external stakeholders are informed of and reminded about the medical conditions policy through clear communication channels. This policy is available on the school website.

**All staff understand and are trained in what to do in an emergency for children with medical conditions at this school.**

- All school staff, including temporary or supply staff, are aware of the medical conditions at this school and understand their duty of care to pupils in an emergency.
- Appropriate staff receive training in what to do in an emergency and this is refreshed at least once a year.
- All children with a medical condition at this school have an individual healthcare plan (IHP), which explains what help they need in an emergency. The IHP will accompany a pupil should they need to attend hospital. Parental permission will be sought and recorded in the IHP for sharing the IHP within emergency care settings.
- This school uses school asthma healthcare plans to inform the appropriate staff (including supply teachers and support staff), of pupils in their care who may need emergency help

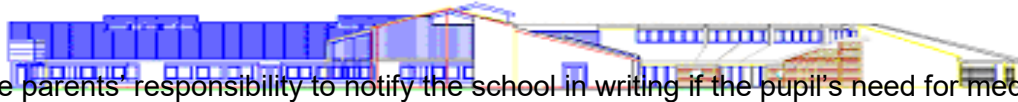


**All staff understand and are trained in the school's general emergency procedures.**

- All staff, including temporary or supply staff, know what action to take in an emergency and receive updates at least yearly.
- If a pupil needs to attend hospital, a member of staff (preferably known to the pupil) will stay with them until a parent arrives, or accompany a child taken to hospital by ambulance. They will not take pupils to hospital in their own car.

**This school has clear guidance on providing care and support and administering medication at school.**

- This school understands the importance of medication being taken and care received as detailed in the pupil's IHP.
- This school will make sure that there are several members of staff who have been trained to administer the medication and meet the care needs of an individual child. This includes escort staff for home to school transport if necessary. This school will ensure that there are sufficient numbers of staff trained to cover any absences, staff turnover and other contingencies. This school's governing body has made sure that there is the appropriate level of insurance and liability cover in place.
- This school will not give medication (prescription or non-prescription) to a child without a parent's written consent.
- Where it is appropriate to do so, pupils will be encouraged to administer their own medication, if necessary under staff supervision. Parents will be asked to confirm in writing if they wish their child to carry their medication with them in school
- Parents are responsible for providing the school with comprehensive information regarding the pupil's condition and medication.
- In respect of children with asthma, the parents are asked to fill out the pupil's school Asthma Health Care Plan. Parents then return these completed forms to the school. Parents may need to liaise with their child's health care professionals to complete the form. The school Asthma Health Care Plans are used to create a centralised register of pupils with asthma. An identified member of staff has responsibility for the register at this school. The responsible member of staff follows up any of the details on a pupil's Asthma Health Care Plan or if permission for administration of medicines is unclear or incomplete. Parents at this school are regularly reminded to update their child's Asthma Health Care Plan if their child has a medical emergency or if there have been changes to their symptoms (getting better or worse) or their medicines and treatments change
- Pupils who have been diagnosed with allergies that may lead to anaphylactic shock are likely to carry prescription medication which may include an adrenaline injection to be given via an "Epipen". The age of the child and the severity of the attack will largely determine whether they are able to self-administer the treatment or will require assistance. This makes it essential for an individual care plan to be worked out and for as many staff to be trained in the necessary emergency action as possible.
- Prescribed four times per day medication will not be accepted into school without complete written and signed instructions from the parent.
- Staff will not give a non-prescribed medicine
- Staff will not give prescribed, less than four times a day medicine.
- If children refuse to take medicines, staff will not force them to do so, and will inform the parents of the refusal, as a matter of urgency on the same day. If a refusal to take medicines results in an emergency, the school's emergency procedures will be followed.



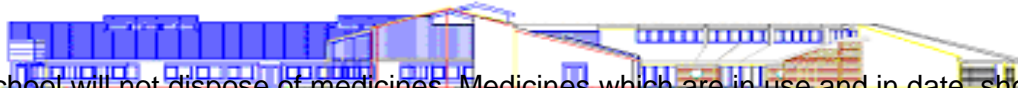
- It is the parents' responsibility to notify the school in writing if the pupil's need for medication has ceased.
- The school will not make changes to the dosage on parental instructions.
- Only reasonable quantities of medication should be supplied to the school (for example, a maximum of four weeks supply at any one time.)
- Each item of medication must be delivered to the Authorised Person in the school office, in normal circumstances by the parent, **in a secure and labelled container as originally dispensed.** Each item of medication must be clearly labelled with the following information
  - Pupil's name
  - Name of medication
  - Dosage
  - Frequency of administration
  - Date of dispensing
  - Storage requirements (if important)
  - Expiry date

The school will not accept items of medication in unlabelled containers

- When administering medication, for example pain relief, this school will check the maximum dosage and when the previous dose was given. Parents will be informed. This school will not give a pupil aspirin unless prescribed by a doctor.
- This school will make sure that a trained member of staff is available to accompany a pupil with a medical condition on an off-site visit, including overnight stays.
- Parents at this school understand that they should let the school know immediately if their child's needs change.

**This school has clear guidance on the storage of medication and equipment at school.**

- This school makes sure that all staff understand what constitutes an emergency for an individual child and makes sure that emergency medication/equipment is readily available wherever the child is in the school and on off-site activities. Pupils may carry their emergency medication with them if they wish and if the school has parental consent.
- This school will keep controlled drugs stored securely, but accessibly, with only named staff having access. Staff at this school can administer a controlled drug to a pupil once they have had specialist training.
- This school will make sure that all medication is stored safely in a medicine cabinet out of reach of pupils, and that pupils with medical conditions know where they are at all times and have access to them immediately.
- This school will store medication that is in date and labelled in its original container where possible, in accordance with its instructions. The exception to this is insulin, which though must still be in date, will generally be supplied in an insulin injector pen or a pump.
- Parents/Carers are asked to collect all medications/equipment at the end of the school term, and to provide new and in-date medication at the start of each term. It is the responsibility of the parent/carer to ensure that the child's medication is in school and that it is in-date.
- This school disposes of needles and other sharps in line with local policies. Sharps boxes are kept securely at school and will accompany a child on off-site visits. They are collected and disposed of in line with local authority procedures.



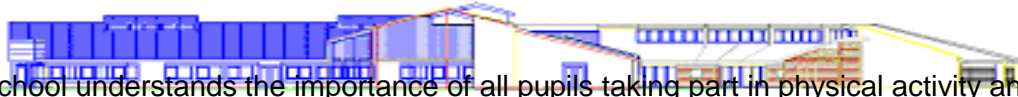
- The school will not dispose of medicines. Medicines which are in use and in date, should be collected by the parent at the end of each term. Date expired medicines or those no longer required for treatment will be returned immediately to the parent for transfer to a community pharmacist for safe disposal.

**This school has clear guidance about record keeping.**

- Parents/Carers at this school are asked if their child has any medical conditions on the enrolment form.
- This school uses an IHP to record the support an individual pupil needs around their medical condition. The IHP is developed with the pupil (where appropriate), parent, school staff, specialist nurse (where appropriate) and relevant healthcare services.
- This school has a centralised register of IHPs, and an identified member of staff has the responsibility for this register.
- IHPs are regularly reviewed, at least every year or whenever the pupil's needs change.
- The pupil (where appropriate) parents, specialist nurse (where appropriate) and relevant healthcare services hold a copy of the IHP. Other school staff are made aware of and have access to the IHP for the pupils in their care.
- This school makes sure that the pupil's confidentiality is protected.
- This school seeks permission from parents before sharing any medical information with any other party.
- This school meets with the pupil (where appropriate), parent, specialist nurse (where appropriate) and relevant healthcare services prior to any overnight or extended day visit to discuss and make a plan for any extra care requirements that may be needed. This is recorded in the pupil's IHP which accompanies them on the visit.
- This school keeps an accurate record of all medication administered, including the dose, time, date and supervising staff which they will have available for parents.
- This school makes sure that all staff providing support to a pupil have received suitable training and ongoing support, to make sure that they have confidence to provide the necessary support and that they fulfil the requirements set out in the pupil's IHP. This should be provided by the specialist nurse/school nurse/other suitably qualified healthcare professional and/or the parent/carer. The specialist nurse/school nurse/other suitably qualified healthcare professional will confirm their competence, and this school keeps an up-to-date record of all training undertaken and by whom.

**This school ensures that the whole school environment is inclusive and favourable to pupils with medical conditions. This includes the physical environment, as well as social, sporting and educational activities.**

- This school is committed to providing a physical environment accessible to pupils with medical conditions and pupils are consulted to ensure this accessibility. This school is also committed to an accessible physical environment for out-of-school activities.
- This school makes sure the needs of pupils with medical conditions are adequately considered to ensure their involvement in structured and unstructured activities, extended school activities and residential visits.
- All staff are aware of the potential social problems that pupils with medical conditions may experience and use this knowledge, alongside the school's bullying policy, to help prevent and deal with any problems. They use opportunities such as PSHE and science lessons to raise awareness of medical conditions to help promote a positive environment.

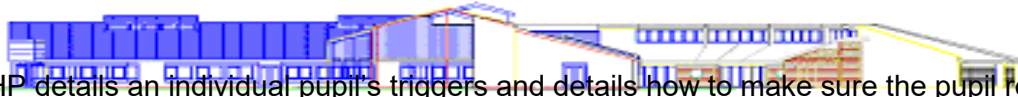


- This school understands the importance of all pupils taking part in physical activity and that all relevant staff make appropriate adjustments to physical activity sessions to make sure they are accessible to all pupils. This includes out-of-school clubs and team sports.
  - This school understands that all relevant staff are aware that pupils should not be forced to take part in activities if they are unwell. They should also be aware of pupils who have been advised to avoid/take special precautions during activity, and the potential triggers for a pupil's medical condition when exercising and how to minimise these.
  - This school makes sure that pupils have the appropriate medication/equipment/food with them during physical activity.
  - This school makes sure that pupils with medical conditions can participate fully in all aspects of the curriculum and enjoy the same opportunities at school as any other child, and that appropriate adjustments and extra support are provided.
  - All school staff understand that frequent absences, or symptoms, such as limited concentration and frequent tiredness, may be due to a pupil's medical condition. This school will not penalise pupils for their attendance if their absences relate to their medical condition.
  - This school will refer pupils with medical conditions who are finding it difficult to keep up educationally to the SENCO/ALNCO/Special Educational Needs Advisor who will liaise with the pupil (where appropriate), parent and the pupil's healthcare professional.
  - Pupils at this school learn what to do in an emergency.
- 
- This school makes sure that a risk assessment is carried out before any out-of-school visit, including work experience and educational placements. The needs of pupils with medical conditions are considered during this process and plans are put in place for any additional medication, equipment or support that may be required.

**This school is aware of the common triggers that can make common medical conditions worse or can bring on an emergency. The school is actively working towards reducing or eliminating these health and safety risks and has a written schedule of reducing specific triggers to support this.**

- This school is committed to identifying and reducing triggers both at school and on out-of-school visits.
- School staff have been given training and written information on medical conditions which includes avoiding/reducing exposure to common triggers. It has a list of the triggers for pupils with medical conditions at this school, has a trigger reduction schedule and is actively working towards reducing/eliminating these health and safety risks.
- Anaphylaxis is an acute, severe allergic reaction requiring immediate medical attention – it can be life threatening. It can be triggered by certain foods (eg nuts, eggs, milk or fish), certain drugs or insect stings. Every effort should be made to prevent known sufferers from coming into contact with substances that are known to bring on the reaction. Symptoms usually occur within minutes of being exposed to the trigger and may include:
  - Itching or a strange metallic taste in the mouth
  - Swelling of the throat and tongue
  - Difficulty in swallowing
  - Hives
  - Generalised flushing of the skin
  - Abdominal cramps and nausea
  - Increased heart rate





- The IHP details an individual pupil's triggers and details how to make sure the pupil remains safe throughout the whole school day and on out-of-school activities. Risk assessments are carried out on all out-of-school activities, taking into account the needs of pupils with medical needs.
- This school reviews all medical emergencies and incidents to see how they could have been avoided, and changes school policy according to these reviews.

**Each member of the school and health community knows their roles and responsibilities in maintaining and implementing an effective medical conditions policy.**

- This school works in partnership with all relevant parties including the pupil (where appropriate), parent/carer, school's governing body, all school staff, employers and healthcare professionals to ensure that the policy is planned, implemented and maintained successfully.

**The medical conditions policy is regularly reviewed, evaluated and updated. Updates are produced every year.**

- In evaluating the policy, this school seeks feedback from key stakeholders including pupils, parents/carers, school healthcare professionals, specialist nurses and other relevant healthcare professionals, school staff, local emergency care services, governors and the school employer. The views of pupils with medical conditions are central to the evaluation process.

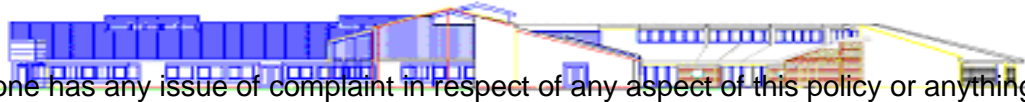
**Examples of unacceptable practice**

it is not generally acceptable practice to:

- prevent children from easily accessing their inhalers and medication and administering their medication when and where necessary;
- assume that every child with the same condition requires the same treatment;
- ignore the views of the child or their parents; or ignore medical evidence or opinion, (although this may be challenged);
- send children with medical conditions home frequently or prevent them from staying for normal school activities, including lunch, unless this is specified in their individual healthcare plans;
- if the child becomes ill, send them to the school office or medical room unaccompanied or with someone unsuitable;
- penalise children for their attendance record if their absences are related to their medical condition eg hospital appointments;
- prevent pupils from drinking, eating or taking toilet or other breaks whenever they need to in order to manage their medical condition effectively;
  
- require parents, or otherwise make them feel obliged, to attend school to administer medication or provide medical support to their child, including with toileting issues. No parent should have to give up working because the school is failing to support their child's medical needs; or
- prevent children from participating, or create unnecessary barriers to children participating in any aspect of school life, including school trips, eg by requiring parents to accompany the child.

**Complaints**





- If anyone has any issue or complaint in respect of any aspect of this policy or anything relating to a child with a medical condition then their complaint should be forwarded to the school in line with the Complaints Procedure as set out on the school website.