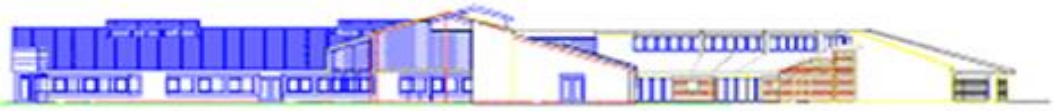


Re



The governors and staff are very grateful to all parents who gave up their time to complete the questionnaires. The views of parents are crucial to maintaining the high standards at Redhill. The parental input has already enabled the school to put in place some additional measures to respond to those issues raised.

The results of the questionnaires are overwhelmingly positive. It is clear from the results and the comments given by parents that they have a very positive view of the school which reflects the high level of commitment from the Headteacher, the staff and the governors to drive forward standards and ensure that Redhill is a school that we are all proud of.

Please see below for the full collated results of this questionnaire.

100 responses received.		Strongly agree	Agree	Neither agree/disagree or no experience	Disagree
<b>WELL BEING</b>					
1	<b>My child enjoys coming to school</b>	66	32	2	0
2	<b>My child is safe at school</b>	70	30	0	0
3	<b>My child is well looked after</b>	74	25	1	0
4	I am happy with the school lunches	40	43	17	6
5	My child enjoys playtimes and dinnertimes	63	34	1	2
6	My child is encouraged to lead a healthy lifestyle	48	50	5	0
7	I am satisfied with the condition of the school buildings	58	38	4	0
8	I am satisfied with the condition of the school grounds	64	32	4	0
9	My child is encouraged to work hard and do their best	64	34	2	0
10	The school systems of rewarding and praising are effective	48	45	5	0
11	<b>Children behave well in school</b>	62	31	6	0
12	<b>The school deals with any incidents of bullying effectively</b>	39	40	22	2
13	My child is confident that should they have a problem, there is someone they can go to in school who will listen to them	42	47	9	2
14	<b>My child is taught well at school</b>	58	42	0	0
15	<b>My child is making good progress</b>	58	42	0	0
16	<b>The school communicates with me effectively about my child's progress</b>	45	43	11	1
17	The school communicates with me effectively about how to support my child's learning	43	43	14	1
18	I am pleased with my child's curriculum	46	53	0	1
19	The school has provided worthwhile help with particular learning difficulties	46	44	0	2
20	My child is encouraged to positively contribute to the wider community	43	39	17	13
21	<b>My child receives an appropriate amount of homework for his/her age</b>	44	32	11	1
22	My child enjoys a stimulating range of extra-curricular activities	44	47	8	1
23	I am happy with the quality of breakfast and after school club (Annexe.)	38	28	33	3
24	The school communicates with me effectively about school events and activities	48	52	5	0

25	The school is welcoming and there are opportunities to get involved	49	49	2	0
26	<b>The school responds well to any concerns I raise</b>	43	42	14	1
27	The school promotes worthwhile attitudes and values	45	42	3	0
28	The school encourages parents and guardians to play an active part in school life	49	44	6	1
29	<b>I think the school is well led and managed</b>	52	40	6	1
30	<b>I would recommend Redhill to another family</b>	67	32	1	0

What do you like most about Redhill Primary School?

<p><b>Staffing</b> Staff work incredibly hard for the pupils Staff and children are a credit to you. Supportive staff Friendly approachable staff Teachers who go the extra mile Brilliant ladies in the office Staff professional and well trained and genuinely interested in the children Excellent teaching Staff create an excellent environment for learning School ethos is brilliant</p>	<p><b>Pastoral Care/Contribution</b> Children made to feel part of the school society. All concerns are listened to Children able to contribute; school council, executive, house captains, playground helpers, Fairtrade, music council Children always seem happy Each child is thought of as an individual Very good support and encouragement for the children Children are cared for and their thoughts considered</p>	<p><b>Parents</b> Parent being included with children's rewards Staff are keen to work with parents Support and guidance in and out of school's hours Good home/school relations School appreciates the strains of both parents working full time, and accommodates accordingly Very welcoming to parents Encouraged to be part of the school</p>
<p><b>Communication</b> Excellent communication Good level of information provided to parents Lots of information available on the website Office always happy to assist and pass on messages. Teachers on the doors, easy to clarify events, pass on concerns</p>	<p><b>Leadership</b> Structure and the way the school is run The school is well led and managed Well managed, with a real concern about each child's learning progress Pleased the school has opened their own Nursery</p>	<p><b>Behaviour</b> Behaviour is excellent Redhill values, reflects onto our children's behaviour and respect for others The discipline that it taught at a young age. The ethos and discipline is good Like the recognition of their efforts; roots, leaves, star readers, effective learners, house points</p>
<p><b>Environment</b> Lovely friendly atmosphere Open and transparent Atmosphere is positive and friendly The children and staff all seem very happy</p>	<p><b>Extra-curricular activities</b> Good range of extracurricular activities Given wonderful experiences Well organised after school club/holiday club Exciting range</p>	<p><b>Curriculum</b> High standards are set Curriculum is delivered well with excellent breadth Fun and stimulating activities Great sporting opportunities</p>

How can we make Redhill Primary school even better?

<b>Parental comments made by more than one parent*</b>	<b>School response</b>
School <b>Website/Communication</b> - Improve	We have been developing a new website which we are hoping to launch in March. We aim to make the website easier to navigate, aid communication with parents, help celebrate more what we do in school and provide useful activities and websites to support parents at home.
2 parents – <b>Pupil premium</b> for forces family	All information regarding how this funding is spent is available on the school website under the Parent Information Section.
<b>Improve communication</b> 4 parents - More notice for events, matches,	We will consider these comments. All events known for the term are released during the second week of every term. Sporting events are only sent to the school by the sports partnership two/three

<p>assemblies etc... 3 parents - More notice for celebration assembly.</p> <p>Better system for <b>parents to pay</b> for events and clubs</p>	<p>weeks beforehand.</p> <p>Celebration assemblies represent the work that the children complete that week so cannot be sent out too soon but we agree that a Thursday is too short notice for working parents. A Wednesday deadline is in place which we hope will assist parents.</p> <p>In addition, we have recently purchased a system which is due to be up and running in March. This system will allow school to email all letters, MOF and send any urgent messages. We are hoping this will aid improvements with communication. The system will also enable parents to make payments for all school related activities on-line e.g. school visits, extended clubs.,</p>										
<p>2 parents - <b>Suggestion box</b> for parents</p>	<p>This is a good idea and will be set up shortly in the foyer before entering the main reception area.</p>										
<p>2 parents - <b>praising children</b> for other talents not just sport</p>	<p>Children's talents are celebrated in a wide variety of ways. Children are encouraged to bring in certificates/awards for sporting and non-sporting activities so these can be celebrated either in classes or in assemblies. House point/sticker system is used to praise children for talents and efforts as well as the celebration assembly certificates and the 'trees' and 'roots'.</p>										
<p><b>Homework</b> Too much - 7 parents, Not enough - 5 parents.</p>	<p>There is no a stipulation by the Department of Education regarding homework. The school's policy is to promote reading as a priority and to use homework to prepare children for secondary school expectations, to give children an opportunity to practice and rehearse skills, to provide interesting activities families can do together as well as providing parents with an insight into the curriculum provision. We try at all costs to avoid homework becoming a chore. The school does not feel more homework is appropriate as children of a young primary age should be able to unwind and play after school and should not feel any unnecessary pressures. Parents who do wish to offer more, can do so by accessing many of the websites promoted on the school website inc My Maths.</p>										
<p><b>2 parents – same children for the same roles in school</b></p>	<p>Currently we have the following roles in school which are filled by different children across the school. We endeavour to open these opportunities to all and limit the number of roles children have in school.</p> <table border="1"> <tr> <td><b>School council from whole school community</b> - 28 members</td> <td><b>Executive Council</b> Year 6 role – 7 members</td> </tr> <tr> <td><b>House captains</b> Year 6 role – 4 members</td> <td><b>Senior Librarians</b> Year 6 role -11 members</td> </tr> <tr> <td><b>Junior Road Safety Officers</b> Year 6 role – 2 members</td> <td><b>SAFE</b> Year 5/6 role - 7 members</td> </tr> <tr> <td><b>Travel Council</b> Year 4/5 role – 8 members</td> <td><b>E –safety – KS2</b> Year 5/6 role – 7 members</td> </tr> <tr> <td><b>Playground Friends</b> Year 4/5 role – 8 members</td> <td><b>Fairtrade council</b> Year 4/5/6 – 13 members</td> </tr> </table>	<b>School council from whole school community</b> - 28 members	<b>Executive Council</b> Year 6 role – 7 members	<b>House captains</b> Year 6 role – 4 members	<b>Senior Librarians</b> Year 6 role -11 members	<b>Junior Road Safety Officers</b> Year 6 role – 2 members	<b>SAFE</b> Year 5/6 role - 7 members	<b>Travel Council</b> Year 4/5 role – 8 members	<b>E –safety – KS2</b> Year 5/6 role – 7 members	<b>Playground Friends</b> Year 4/5 role – 8 members	<b>Fairtrade council</b> Year 4/5/6 – 13 members
<b>School council from whole school community</b> - 28 members	<b>Executive Council</b> Year 6 role – 7 members										
<b>House captains</b> Year 6 role – 4 members	<b>Senior Librarians</b> Year 6 role -11 members										
<b>Junior Road Safety Officers</b> Year 6 role – 2 members	<b>SAFE</b> Year 5/6 role - 7 members										
<b>Travel Council</b> Year 4/5 role – 8 members	<b>E –safety – KS2</b> Year 5/6 role – 7 members										
<b>Playground Friends</b> Year 4/5 role – 8 members	<b>Fairtrade council</b> Year 4/5/6 – 13 members										
<p><b>5 parents - School Dinners</b></p>	<p>We continue to work with the kitchens to amend the menu based on feedback from the children and parents. All comments from the questionnaires have been passed on. Vegetarian options continue to remain an issue for many of our children. I am looking to set up a group of parents to meet with the kitchen staff to improve the catering offer for the vegetarians.</p>										
<p><b>2 parents</b> - to ensure that all children get to represent the school in sport</p>	<p>There are sporting events during the year that are open to all children and so every child does have an opportunity to represent the school. See separate sporting letter sent out at the start of the term explaining the selection process.</p>										
<p><b>4 parents - Improve the car parking</b></p>	<p>Sadly, there is nothing we can do to improve the car parking situation. We are working continuously with the police, local residents and parents to ensure that people park safely when dropping off and collecting children. We appreciate that there is insufficient local parking however, we would ask that parents are considerate and safe when parking.</p>										

\*Individual concerns addressed directly with parent if name provided.

Thank you for taking the time to feedback to us, it is really appreciated.